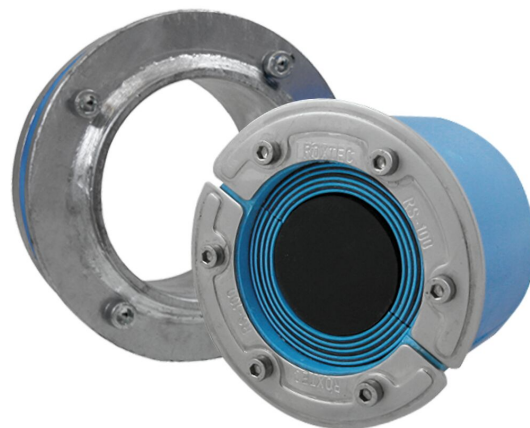




Těsnění Roxtec RS X

Prostup k použití na místech, kde z jakéhokoli důvodu nelze svařovat.

Roxtec RS X je nepřivařované těsnění s průchodkou pro samostatný kabel či trubku. Průchod je ideální volbou pro dodatečnou instalaci nebo tam, kde z jakéhokoli důvodu nelze svařovat. Průchodka má na vnější straně pryžové těsnění, jehož roztažení v otvoru utažením šroubů zajistí pevné připojení. Těsnění RS X lze díky odlupovatelným vrstvám upravit pro kabely a potrubí různých velikostí.



- Optimální pro dodatečnou montáž

Vlastnosti výrobku



Protipožární



Vodotěsné



Plynotěsné

Struktura instalace



Kov

Typ montáže



Stávající otvor

Specifikace a certifikáty

Protipožární ochrana

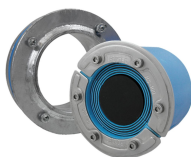
- Nehořlavost TŘÍDY A podle organizace IMO a Mezinárodních předpisů pro postupy požárních zkoušek, 2010

Těsnost

- Plynotěsnost: 2,67 baru (katastrofický)
- Vodotěsnost: 4 baru (katastrofický)

Údaje o izolačních komponentách

Těsnící komponenty



Souprava RS X



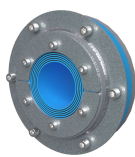
Mazivo Roxtec

Podrobné informace najdete na stránkách www.roxtec.com.

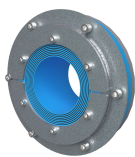


Konfigurované soupravy vstupů

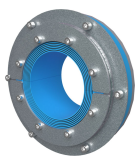
mm/kg



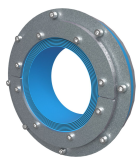
RS X 100 AISI316
WOC/GALV



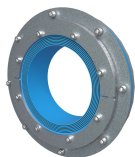
RS X 125 AISI316
WOC/GALV



RS X 150 AISI316
WOC/GALV



RS X 175 AISI316
WOC/GALV



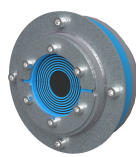
RS X 200 AISI316
WOC/GALV



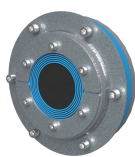
RS X 43 AISI316/GALV



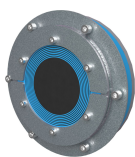
RS X 50 AISI316/GALV



RS X 75 AISI316/GALV



RS X 100 AISI316/GALV



RS X 125 AISI316/GALV

Název	Konfigurace	Rozměry otvoru Ø	Hmotnost Typ. č.
RS X 100 AISI316 WOC/GALV	1x (48.0-70.0)	145 - 147	3 RSXG001001021
RS X 125 AISI316 WOC/GALV	1x (66.0-98.0)	170 - 172	4 RSXG001251021
RS X 150 AISI316 WOC/GALV	1x (93.0-119.0)	199 - 201	5.2 RSXG001501021
RS X 175 AISI316 WOC/GALV		220 - 222	5 RSXG001751021
RS X 200 AISI316 WOC/GALV		250 - 252	6.6 RSXG002001021
RS X 43 AISI316/GALV	1x (4.0-23.0)	82 - 84	0.8 RSXG100431021
RS X 50 AISI316/GALV	1x (8.0-30.0)	90 - 92	1.4 RSXG100501021
RS X 75 AISI316/GALV	1x (24.0-54.0)	115 - 117	2.2 RSXG100751021
RS X 100 AISI316/GALV	1x (48.0-70.0)	145 - 147	3.2 RSXG101001021
RS X 125 AISI316/GALV	1x (66.0-98.0)	170 - 172	2.8 RSXG101251021

The product information provided by Roxtec does not release the purchaser of the Roxtec system, or part thereof, from the obligation to independently determine the suitability of the products for the intended process, installation and/or use.

Roxtec gives no guarantee for the Roxtec system or any part thereof and assumes no liability for any loss or damage whatsoever, whether direct, indirect, consequential, loss of profit or otherwise, occurred or caused by the Roxtec systems or installations containing components not manufactured by an authorized manufacturer and/or occurred or caused by the use of the Roxtec system in a manner or for an application other than for which the Roxtec system was designed or intended.

Roxtec expressly excludes any implied warranties of merchantability and fitness for a particular purpose and all other express or implied representations and warranties provided by statute or common law. User determines suitability of the Roxtec system for intended use and assumes all risk and liability in connection therewith. In no event shall Roxtec be liable for indirect, consequential, punitive, special, exemplary or incidental damages or losses.

The Roxtec products are offered and sold in accordance with the conditions of the Roxtec General Terms of Sales. The latest version of the Roxtec General Terms of Sales can be downloaded from <https://www.roxtec.com/en/about-us/about-roxtec/general-terms-of-sales/>

We reserve the right to make changes to the product and technical information without further notice. Any errors in print or entry are no claims for indemnity. The content of this publication is the property of Roxtec International AB and is protected by copyright.

This document was generated on: 2024-04-06